

## **Immunological and Hematological Profile of HIV Patients on Anti-retroviral Therapy in Port Harcourt, Rivers State, Nigeria**

**Ohanador Robinson<sup>1\*</sup>, A. W. Obianime<sup>2</sup>, J. Aprioku<sup>3</sup> and Igbiks Tamuno<sup>4</sup>**

<sup>1</sup>Department of Biochemistry, Faculty of Science, University of Port Harcourt Nigeria.

<sup>2</sup>Department of Pharmacology, Faculty of Basic Medical Science, University of Port Harcourt, Nigeria.

<sup>3</sup>Department of Experimental Pharmacology, Faculty of Pharmacy, University of Port Harcourt, Nigeria.

<sup>4</sup>Institute of Translational Medicine, University of Liverpool, United Kingdom.

### **Authors' contributions**

*This work was carried out in collaboration between all authors. Author OR designed the study, performed the statistical analysis, wrote the protocol and wrote the first draft of the manuscript. Authors AWO and JA managed the analyses of the study. Author IT managed the literature searches. All authors read and approved the final manuscript.*

### **Article Information**

DOI: 10.9734/IBRR/2017/36037

#### Editor(s):

(1) Fasakin Kolawole, Department of Haematology, Federal Teaching Hospital, Nigeria and Department of Medical Lab. Science, Afe Babalola University, Ado Ekiti, Nigeria.

#### Reviewers:

(1) Tabe Franklin Nyenty, University of Ngaoundere, Cameroon.

(2) Taremwa Ivan Mugisha, International Health Sciences University, Uganda.

(3) Mary J. Burgess, University of Arkansas for Medical Sciences, USA.

(4) Lawrence M. Agius, University of Malta, Malta.

Complete Peer review History: <http://www.sciencedomain.org/review-history/21129>

**Original Research Article**

**Received 9<sup>th</sup> August 2017**  
**Accepted 18<sup>th</sup> September 2017**  
**Published 25<sup>th</sup> September 2017**

### **ABSTRACT**

**Aims:** To profile CD4 count, TNF $\alpha$  levels and cytopenia in HIV seropositive patients on ART and also evaluate the prevalence of hematological cytopenia.

**Study Design:** The present study is a cross sectional study and was carried out in the department of immunology, hematology and blood transfusion, department of pharmacology university of Port Harcourt and university of port-Harcourt teaching hospital, between May 2016 and July 2016.

One hundred patients (45 males and 55 females) were recruited for this study, patients included in this study were HIV positive and on anti-retroviral treatment for at least three months, they were not on any mind altering medications and were mentally sound and above 18 years 4 patients dropped out of the study.

\*Corresponding author: E-mail: [robinsonohanador@yahoo.com](mailto:robinsonohanador@yahoo.com);

**The Results:** Hematological examination, CD4 count and serum TNF  $\alpha$  levels were done. The prevalence of anemia was high (43.7%), neutropenia and leucopenia showed prevalence of 26.00% and 21.9% respectively. Prevalence of lymphopenia was 2.1%, whereas thrombocytopenia was 11.5%. A profile of immunological markers showed that mean CD4 was  $395.81 \pm 273.046$ , high serum TNF  $\alpha$   $65.33.20 \pm 58.52$  pg/ml was observed. WBC, lymphocyte and neutrophil were  $4.82 \pm 1.38$ ,  $45.09 \pm 10.17$  and  $42.83 \pm 11.05$  respectively, serum TNF  $\alpha$  was increased while relative lymphocyte and neutrophil counts were decreased in patients with CD4 less than 200. Platelet count of participants in this study was  $243.62 \pm 66.13$  while RBC, PCV and hemoglobin was  $3.82 \pm 0.75$ ,  $36.39 \pm 4.10$  and  $12.00 \pm 1.806$ g/l respectively.

**Conclusion:** Patients with CD4 less than 200 showed increased TNF- $\alpha$ , reduced CD4, total lymphocyte and neutrophil counts. Finding from this study has led to the recommendation that these parameters be used as biomarkers in monitoring patients and disease control in Nigeria.

*Keywords: ART (Anti-retroviral therapy); TNF- $\alpha$  (Tumor necrosis factor alpha); CD4 (Cluster of differentiation 4, T-Helper cells); WBC (White blood cell count); HIV (Human immunodeficiency virus).*

## 1. INTRODUCTION

It has been shown that inflammation causes increased viral replication, increases the rate of virus entry and causes immune dysfunction in human immunodeficiency virus (HIV) infection, this indicates that immune activation is an important factor in the immune impairment associated with HIV/AIDS progression and the progression of the disease itself [1]. Studies in Europe and North America have shown that the constant replication of HIV virus is the main cause of the chronic inflammation that characterizes HIV patients<sup>1</sup>. The HIV epidemic observed in these places differs from the epidemic recorded in sub-Saharan Africa. Studies of Africans have shown persistent abnormal immune activation [2].

The devastating impact of the virus can be felt on the socioeconomic growth of developing countries since their productive young adults are infected. Developed countries should therefore encourage research on HIV in developing nations to reduce the impact of HIV on the economic growth.

CD4 count and HIV RNA concentration are very significant biomarkers of disease progression in HIV patients [3]. Nonetheless, some other factors can predict and influence the outcome of the disease [4]. Hematological abnormalities such as anemia, neutropenia and thrombocytopenia are commonly observed in HIV patients [5], also increased tumor necrosis factor alpha (TNF-  $\alpha$ ) can be observed. It therefore means that these markers can have been proposed as alternative markers in developing countries.

Various mechanisms that explain the depletion of CD4 cells have been proposed, this shoe because of the crucial role of CD 4 cells in immunity, therefore it is not surprising that its depletion has a devastating impact on host immunity.

Factors that can contribute in monitoring the progression of HIV infection may be important in explaining AIDS in Africa.

CD4 count has become such a useful marker for monitoring immune function in HIV infected patients, hence its extreme value in the management of HIV infection. CD4 count is also a criterion in CDC/WHO classification of HIV infection this criterion is widely used to categorize patents for clinical management of the disease [6].

Tumor necrosis factor-alpha (TNF- $\alpha$ ) is derived from blood cells and remarkable increased levels in the blood have been observed in HIV patients. A range of hematological manifestations is seen during the course of HIV in patents, the manifestation usually presents a great challenge in the management of HIV [7]. The most significant is anemia and then neutropenia and thrombocytopenia. They are generally caused by inadequate production and abnormal expression of cytokines [8].

The prevalence of leucopenia varies widely in patients with HIV, reported cases are between 10-15% [9].

The present study is aimed at evaluating prevalence of anemia, leucopenia,

thrombocytopenia the levels of serum tumor necrosis factor alpha (TNF  $\alpha$ ) and CD4 count of patients on anti-retroviral therapy (ART).

The findings from this study will inform policy and practice as regards safe provision of anti-retroviral therapy (ART) to patients.

It will also present preliminary data regarding hematological manifestation and serum TNF- $\alpha$  level in this part of the Nigeria.

The relationship between various hematological manifestations CD4 TNF  $\alpha$  will be investigated.

## 2. MATERIALS AND METHODS

### 2.1 Study Area

This prospective observational study was carried out in the Department of Immunology, Faculty of Basic Medical Sciences in collaboration with the University of Port Harcourt teaching Hospital Rivers State. University of Port Harcourt teaching hospital is owned and operated by the federal, government of Nigeria. Permission and Ethical Clearance were obtained from the University of Port Harcourt teaching hospital ethics committee. Informed consent was obtained from patients by either signature or thumb print.

### 2.2 Study Population and Procedure

Minimum sample size was determined using the

$$\text{formula: } n = \frac{(z_{\alpha/2})^2 P(1-p)}{E^2}$$

- > Z=1.96 (95% Confidence interval)
- > p = 0.5
- > E = 0.103
- > z \* p \* (1-p) / E<sup>2</sup>

Minimum sample size=90 (primary maker was the prevalence of immune failure defined as CD4 <200)

A total of 100 HIV patients were recruited into the study to accommodate for the fallout (4 Patients) and also meet the required minimum sample size for the study. A well evaluated and structured questionnaire was used to obtain information on demographic characteristics. The study population consisted of HIV patient on Anti-retroviral therapy (ART). Patients who started treatment within the last three months were not recruited. Patients were recruited based on the center for disease control (CDC 1993) revised classification for HIV infection G.3.

### 2.3 Inclusion Criteria

- 1) HIV positive.
- 2) On Anti-retroviral therapy (ART) for at least 3 months.
- 3) Not Terminally ill.
- 4) Ability to give informed consent
- 5) Not on any herbal, traditional or complementary medicine in the last 2 weeks prior to commencement of study

### 2.4 Exclusion Criteria

- 1) Less than 18 years old
- 2) Unable to give informed consent
- 3) Severely ill patients
- 4) Pregnant or planning to be pregnant in the next 4 months.
- 5) On traditional, herbal or complementary medicines.
- 6) On mind altering medications

Participants were properly informed about the study after which a consent form was signed by participants for documentation.

### 2.5 Blood Sample Analysis

About 4ml of venous blood was collected into a lithium heparin bottle by an experienced laboratory technologist from each subject for immunological and hematological investigation. Hematological parameters were determined using hematology analyzer (Mindray, China), CD4 count was carried out using Partech cyflow machine (Cytech development Inc, Partech, Germany). Hematology laboratory analysis was carried out in Hematology Blood transfusion and Immunology department of the University of Port Harcourt Teaching Hospital (UPTH), Rivers state Nigeria. ELISA test was performed in the Chemical pathology department of the University of Port Harcourt Teaching Hospital (UPTH), Rivers state Nigeria

### 2.6 Statistical Analysis

Software program (SPSS version 20, SPSS Chicago) was used to analyze data. Mean and standard deviation was used to describe the data. Charts were also used to present data graphically.

### 2.7 Consideration

Ethical clearance for this research was obtained from the Ethical Committee of the University of Port Harcourt.

### 3. RESULTS AND DISCUSSION

The demographics of participants are in Table 1. Table 2 shows the distribution of CD4 counts in participants of the study, 34.4% of the patients had CD4 counts greater than 500, 35.4% was within 200-500 while 36.2% had CD4 count less than 200.

Fig. 2 shows the severity of anemia in the population. About 56.3% of the population had a normal concentration of hemoglobin, only 1% of the participants had severe anemia, mild and moderate anemic subjects were 33.3% and 9.4% respectively.

Fig. 3 shows the prevalence of thrombocytopenia, prevalence of thrombocytopenia was 11.5%, in this population, mild thrombocytopenia was present in 9.4% of the participants while severe thrombocytopenia was present in 2.1% of participants.

Prevalence of neutropenia was also estimated, prevalence was 26% amongst which 2.8% of participants were in the mild neutropenia group, 5.2% of the participants were in the moderate Neutropenia group, whereas, 21.9% presented with neutropenia.

Lymphopenia was also investigated. About 2.1% of the participants presented with lymphopenia whereas 3.1% had lymphocytosis.

Leucopenia was accessed in participants using WBC, 21.9% of participants presented with mild leucopenia, 8.3% of participants had moderate leucopenia while 1% had severe leucopenia.

CD4 count and TNF  $\alpha$  were immunological markers used to access the immunological

system. The CD4 count of the participants was observed and results showed that the mean CD4 count was  $395.81 \pm 273.6$  cells/ $\mu$ L, mean tumor necrosis factor alpha (TNF  $\alpha$ ) was  $65.33 \pm 58.53$ .

**Table 1. Demographics of patients recruited for the study**

Variables	Frequency (no. of occurrence)	Percentage ( $\frac{\text{frequency}}{\text{sample size}} \times 100$ )
F	55	71.0
M	45	29.0
<b>Educational status</b>		
No formal education	11	2.8
Post graduate	11	17.6
Primary	23	13.4
Secondary	33	55.9
Tertiary	5	.8
Undergraduate	13	9.6
<b>Occupation of participants</b>		
Business man	11	13.1
Civil servant	13	17.1
Engineer	7	1.8
Farmer	6	4.0
Mechanic	1	.3
Seamstress	1	.3
Self employed	23	14.1
Student	21	7.8
Tailor	1	.3
Teacher	1	.3
Trader	11	41.1
<b>Income in Naira</b>		
>50,000	28	17.1
10-30,000	18	31.2
10-30,001	14	2.5
30-50,000	17	34.0
5-10,000	19	15.1

**Table 2. summary of immunological and hematological parameters**

	One-sample statistics			
	N	Mean	Std. deviation	Std. error mean
Age	96	40.86	11.2	1.15
CD4(cells/ $\mu$ L) Baseline	96	395.81	273.05	27.89
RBC(million/ $\mu$ L/cu mm) Baseline	95	3.82	.76	.078
HB (g/dl) Baseline	96	12.00	1.81	.18
PCV (%) Baseline	96	36.39	4.10	.41
PLT( x $10^3$ /mL) Baseline	96	244.68	64.25	7.29
Absolute Lymphocyte count Baseline	96	2078.720	889.864	90.821
LYMP (%) Baseline	96	45.09	10.177	1.039
Absolute Neutrophil Count (Baseline)	96	1897.26	823.92	84.09
NUTR (%) Baseline	96	42.83	11.04	1.12
WBC( $10^3$ /mm <sup>3</sup> ) Baseline	96	4.76	1.23	0.13
TNF $\alpha$ (pg/ml)	96	66.27	23.43	8.21

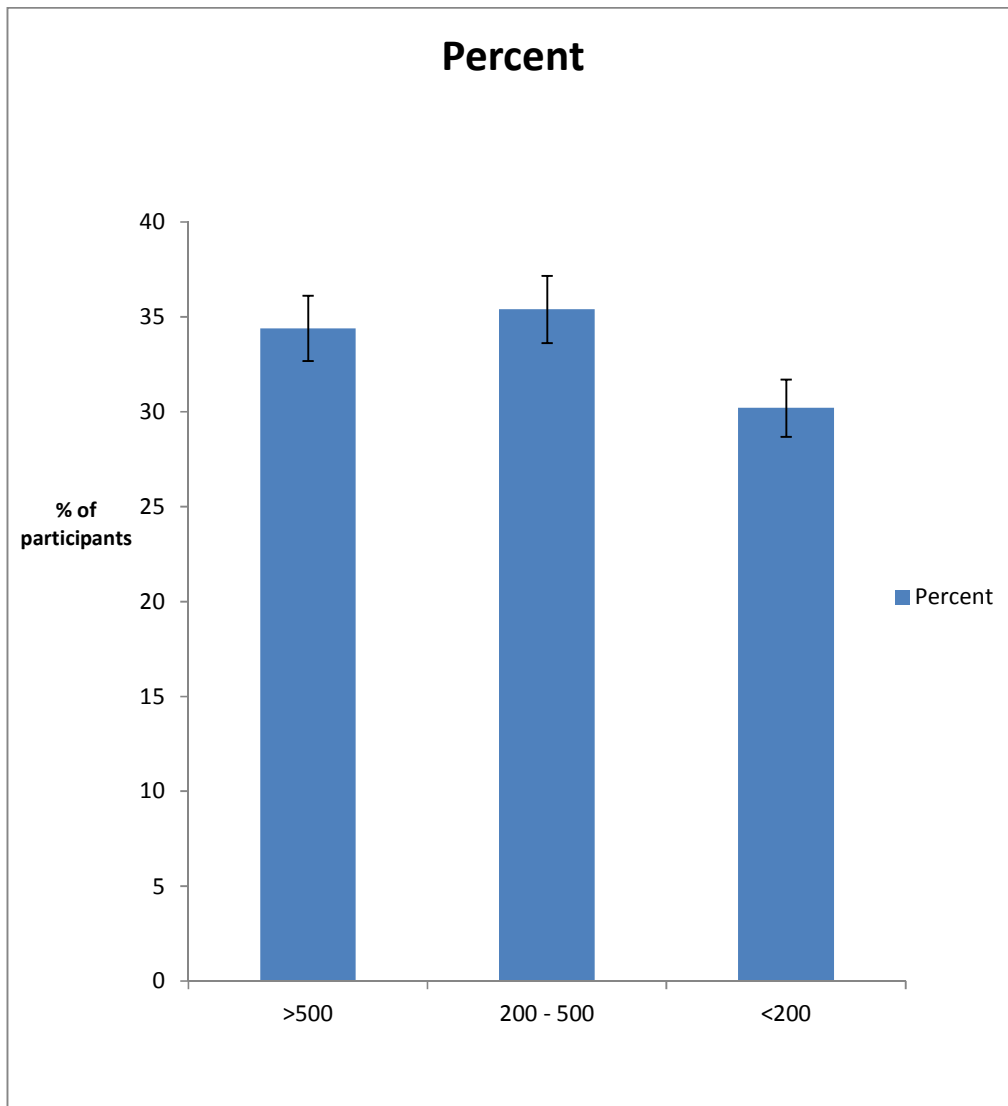
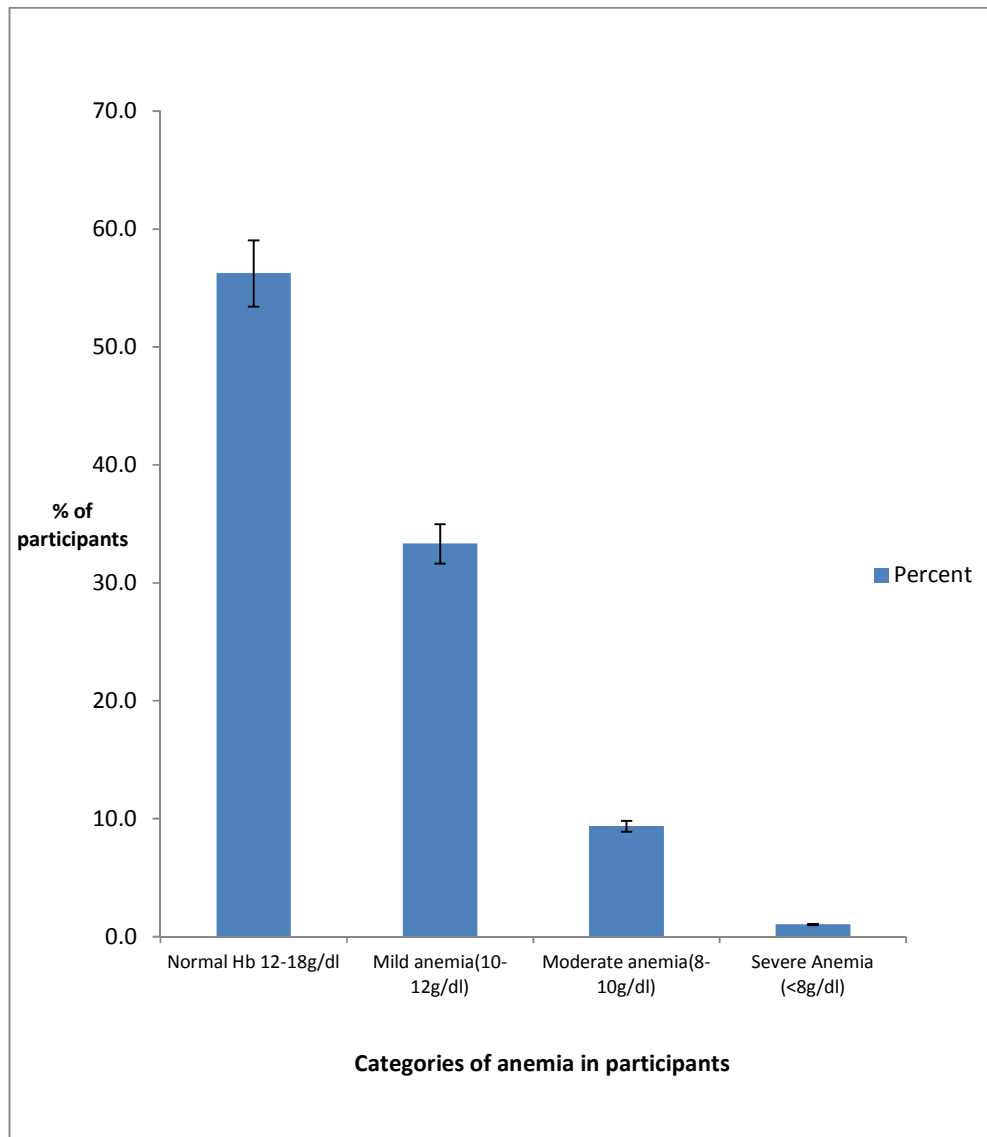


Fig. 1. Percentage of patients in various CD4 categories

Table 3. Immunological and hematological differences observed in HIV patients in Rivers state

	CD4 (P-value)	TNF-α	WBC
CD4> 500	689.76±205.104	43.11±23.459	5.44±1.41
CD4 200 - 500	363.06±88.116*(0.01)	62.25±49.748*(0.02)	4.76±1.17
CD4< 200	99.72±42.293**(<0.001)	64.06±68.255*(0.03)	4.15±1.29
	<b>ALC</b>	<b>ANC</b>	<b>LYMP (%)</b>
CD4> 500	2467.74±913.90	2189.14±908.73	47.76±8.88
CD4 200 - 500	2088.30±795.82	2003.29±965.58	45.21±9.81
CD4< 200	1624.81±770.62***(0.02)	1963.35±863.97*	41.93±11.36
	<b>NUT (%)</b>	<b>Hb</b>	<b>PLT</b>
CD4> 500	46.66±12.49	12.52±1.50	209.48±75.65
CD4 200 - 500	41.52±9.53	11.65±2.07	211.54±66.16
CD4< 200	40.85±10.61	11.83±1.71	239.79±86.86

N=96, Results expressed as Mean±SE(p-value), “\*” shows significant difference when compared to patients with CD4 <200, “\*\*\*” shows significant difference when compared to patients with CD4 between 200-500



**Fig. 2. Severity of anemia in participants**

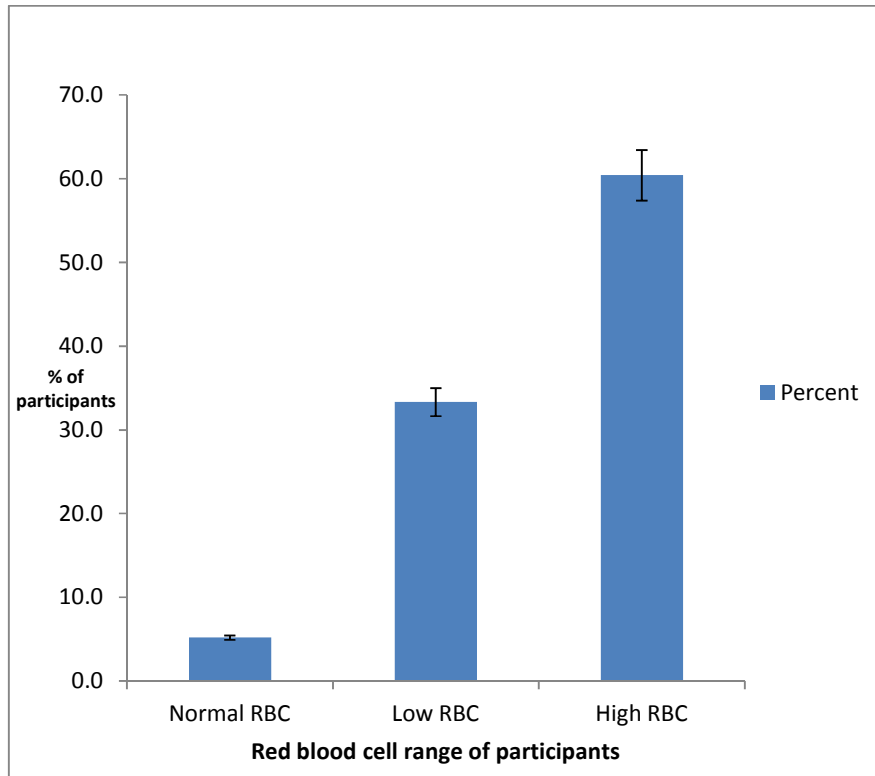
The Mean hemoglobin (Hb) concentration of participants was also accessed and was pegged as Hb,  $12 \pm 1.81\text{g/dl}$ . Packed cell volume (PCV) was  $36.39 \pm 4.1\%$ , while platelet (PLT) count was  $245.00 \pm 66.00 \times 10^3/\text{ml}$ .

The relative lymphocyte count was  $45 \pm 10\%$ , while the Absolute lymphocyte count was  $1897.20 \pm 10\ 823.92$ .

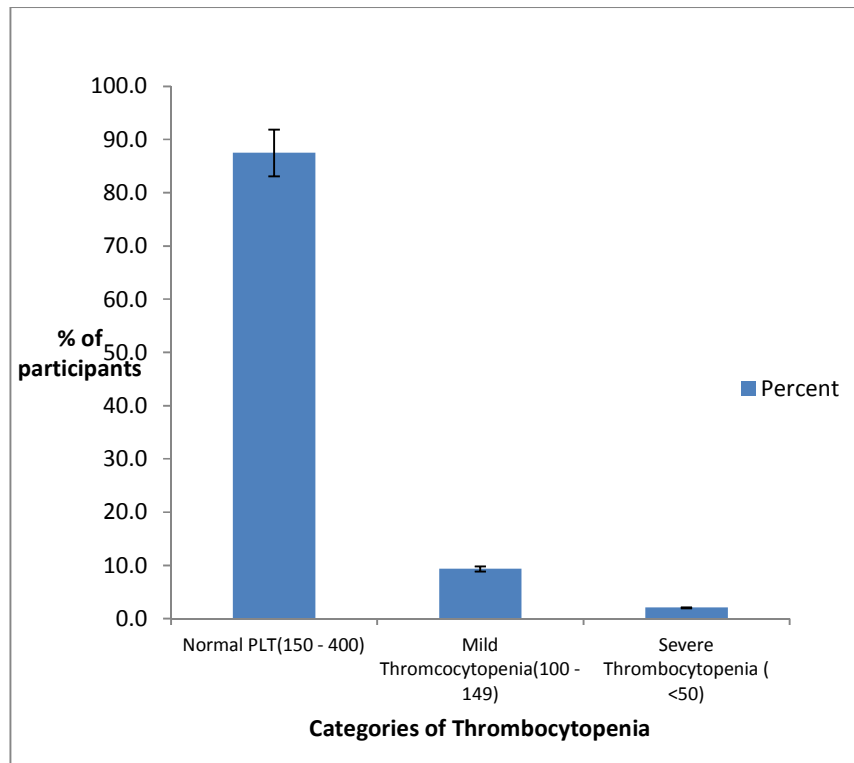
The relative neutrophil count neutrophil was  $42.823 \pm 11.05\%$ . Absolute neutrophil has  $1897.21 \pm 823.9$ . White blood cell count (WBC) was  $4.82 \pm 1.382 \times 10^3/\text{mm}^3$ .

### 3.1 Prevalence of Cytopenia in Participants

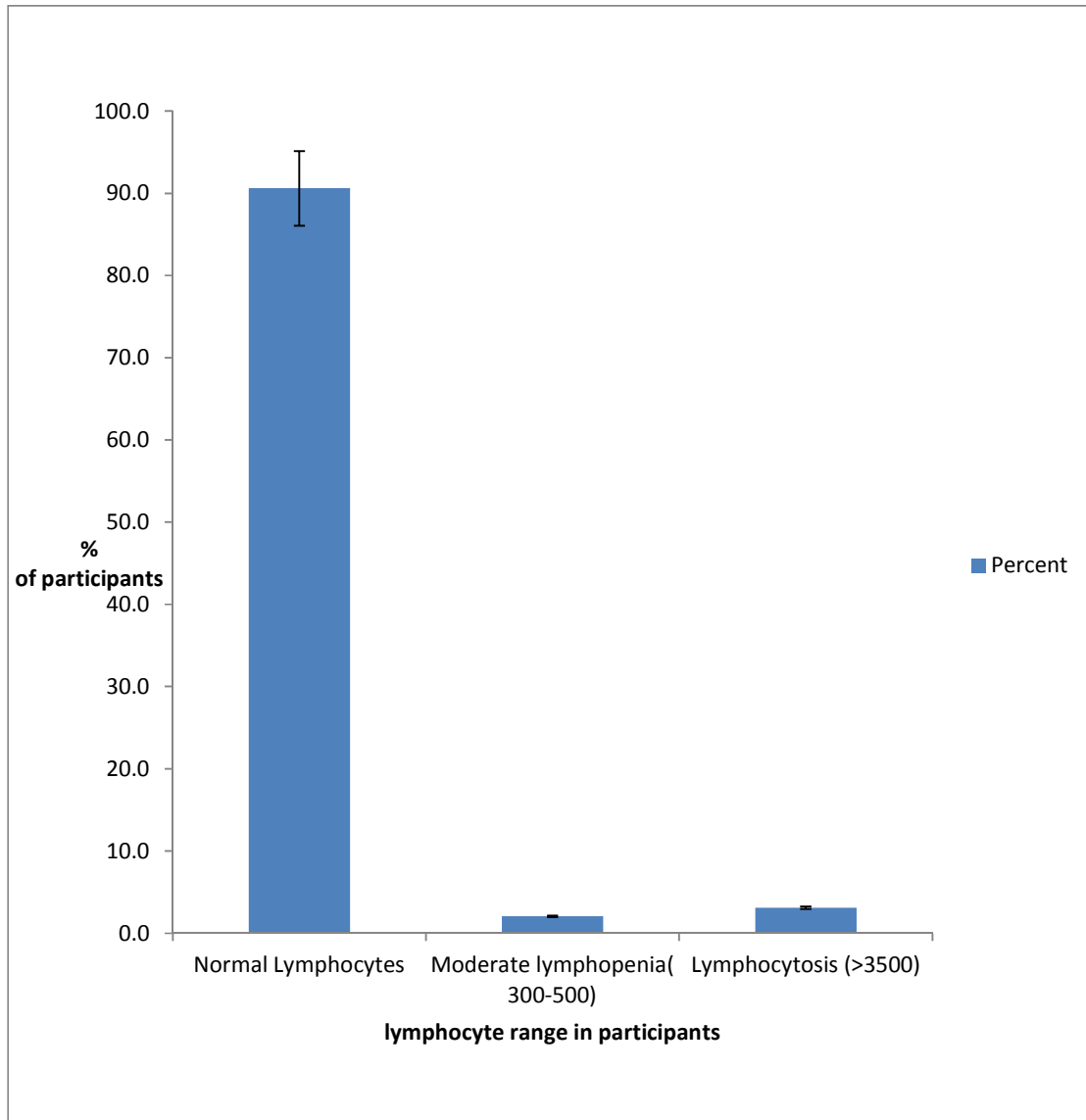
In this study Anemia, leucopenia, neutropenia and thrombocytopenia were common findings. These same findings have been documented by [10,11,12]. In this study prevalence of Anemia was 43.7%, which was higher thrower than the 65.5% prevalence found in India in 2008 [13]. Another study in Brazil recorded 37.5% [14]. Furthermore, these values were lower than that done in Ogun state of Nigeria, where prevalence was 74% [15].



**Fig. 3. Red blood cell distribution of participants**



**Fig. 4. Prevalence of thrombocytopenia**



**Fig. 5. Prevalence of lymphopenia in participants**

The report of this study is also consistent with those reported by [16,17], where they stated that the prevalence of severe anemia declined while mild to moderate anemia remained common. The anemia may be as a result of serum erythropoietin levels, [18] auto-antibodies to erythropoietin, or marrow suppression by opportunistic infections, and medications [19].

A leucopenia prevalence of 30.3% was observed in this study, which was higher than the 26.6% recorded by [20], prevalence of neutropenia and lymphopenia in this study, which was 26% and

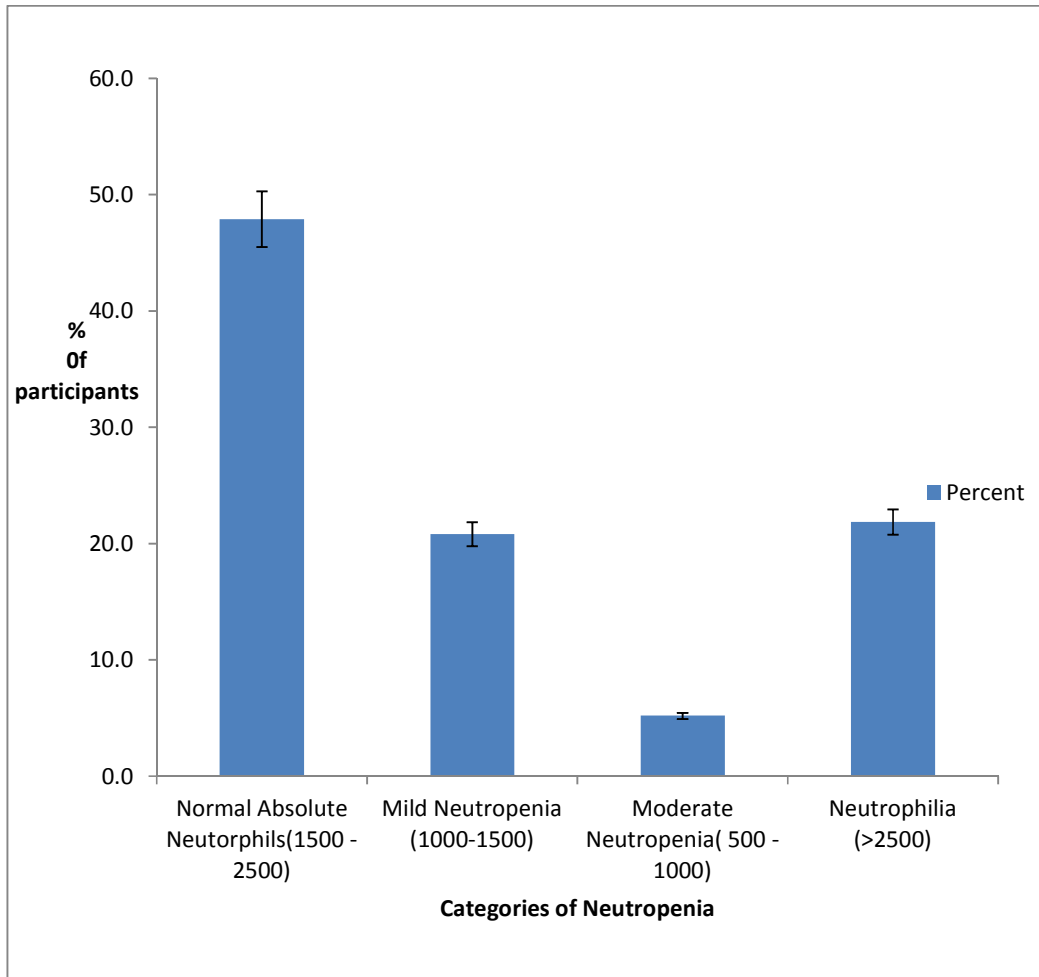
2.1% respectively and these findings were consistent with those of [20].

The findings in this study also show that the results were lower than prevalence found by [21].

It was also observed that the CD4 count of patients in this study was  $395.81 \pm 273.05$ ; this reduced CD4 count may explain the high prevalence of leucopenia and neutropenia.

This may be as a result of increased suppression of bone marrow and direct T helper cell infection.





**Fig. 6. Prevalence of Neutropenia in participants**

The prevalence of thrombocytopenia was 11.5% in this study and this was lower when compared to studies in Lagos [22] where prevalence was 1%. Thrombocytopenia may be due to destruction of platelets by immune cells [23].

The present study also observed lymphocytosis prevalence to be 3.1%, this is consistent with studies by [24,25], they reported that physiologic lymphocytosis was peculiar to West Africans.

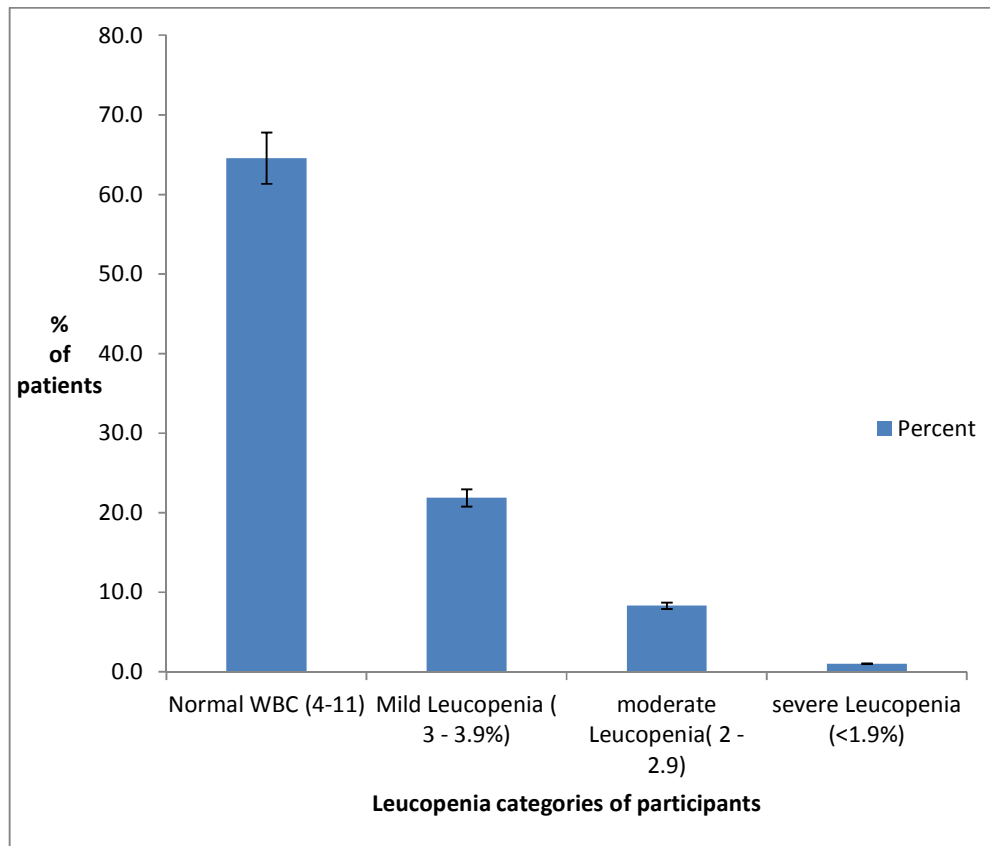
### 3.2 Immunological Markers in Patients

The mean CD4 count of participants in this study was  $395.81 \pm 273.05$ , this value was higher than that reported by [26] findings were higher than those reported by [27] in the UK, values were 270 cells.

Tumor necrosis factor plays a major role in HIV, TNF  $\alpha$  levels have been found to be consistently high in HIV patients of African origin [28]. The present study observed TNF  $\alpha$  levels to be  $65.33 \pm 58.2$  pg/ml, this result were greater than those obtained from [28]. Serum level of TNF alpha was higher in patients with CD4 less than 200 as shown the results.

The increased serum levels of TNF-alpha are not paralleled by increased ability of immune cells to respond positively upon stimulation by inducing agents; rather this ability weakens with disease progression.

Since persistent TNF  $\alpha$  activation may have an important pathogenic role, it will be useful to observe TNF  $\alpha$  levels in HIV patients.



**Fig. 7. Prevalence of leucopenia in participants**

#### 4. CONCLUSION

The most common hematological abnormalities in the study were anemia, leucopenia and neutropenia, the prevalence of anemia was high, and prevalence of leucopenia and thrombocytopenia were also high. High levels of tumor necrosis factor alpha (TNF  $\alpha$  levels) were also observed. The mean CD4 count was observed to be between 200-500 cells/ml. Patients with CD4 less than 200 showed increased TNF  $\alpha$ , reduced CD4, total lymphocyte and neutrophil counts. Finding from this study has led to the recommendation that these parameters be used as biomarkers in monitoring patients and disease control in Nigeria. Therefore, patients should continuously monitor Absolute lymphocyte and neutrophil counts, TNF  $\alpha$  levels, hematological and hematological dysfunctions regularly. These parameters are less expensive and readily available when compared to CD4 monitoring which is characterized with low or no availability in some rural areas, constant epileptic power problems,

lack of reagents and lack of proper equipment maintenance.

#### CONSENT

As per international standard or university standard, patient's written consent has been collected and preserved by the authors.

#### ETHICAL APPROVAL

As per international standard or university standard, written approval of Ethics committee has been collected and preserved by the authors.

#### COMPETING INTERESTS

Authors have declared that no competing interests exist.

#### REFERENCES

1. Appay V, Sauce D. Immune activation and inflammation in HIV-1 infection: Causes

- and consequences. *The Journal of Pathology*. 2008;214(2):231-241.
2. Bentwich Z, Kalinkovich A, Weisman Z. Immune activation is a dominant factor in the pathogenesis of African AIDS. *Immunology Today*. 1995;16(4):187-191.
  3. Rizzardini G, Trabattoni D, Saresella M, Piconi S, Lukwiya M, Declich S, Ferrante P. Immune activation in HIV-infected African individuals. *Aids*. 1998;12(18):2387-2396.
  4. Lawn SD. AIDS in Africa: The impact of coinfections on the pathogenesis of HIV-1 infection. *Journal of Infection*. 2004;48(1):1-12.
  5. Autran B, Carcelain G, Debre P. Immune reconstitution after highly active antiretroviral treatment of HIV infection. In *Progress in Basic and Clinical Immunology*. Springer US. 2001;205-212.
  6. Center for Disease Control & Prevention. 1993 Revised classification system and expanded surveillance definition for AIDS. *MMWR*. 1992;41:2-4.
  7. Volberding PA, Baker KR, Levine AM. Human immunodeficiency virus hematology. *Hematology Am Soc Hematol Educ Program*. 2003;294-313.
  8. Kumaraswamy N, Solomon S. Spectrum of opportunistic infections among AIDS patients in Tamil Nadu, India. *Int J STD AIDS*. 1995;6:447-9.
  9. Zon LI, Gropman JE. Hematologic manifestations of the human immunodeficiency virus (HIV). *Seminars in Hematology*. 1988;25:208-218.
  10. Gange SJ, Lau B, Phair J, Riddler SA, Detels R, Margolick JB. Rapid declines in total lymphocyte count and hemoglobin in HIV infection begin at CD4 lymphocyte counts that justify antiretroviral therapy. *Aids*. 2003;17(1):119-21.
  11. Muluneh A, Fessahaye A. Hematologic abnormalities among children on HAART in Jimma University Specialized Hospital, Southwestern Ethiopia. *Ethiop J Health Sci*. 2009;19(2):83-89.
  12. Akinbami A, Oshinaike O, Adeyemo T. Hematologic abnormalities in treatment-naïve HIV patients. Lagos, Nigeria. *Infect Dis: Res Treat*. 2010;3:45-49.
  13. Subbaraman R, Devaleenal B, Selvamuthu P. Factors associated with anaemia in HIV-infected individuals in southern India. *Int J STD AIDS*. 2009;20(7):489-492.
  14. De Santis GC, Brunetta DM, Vilar FC, Brandao RA, de Albernaz Muniz RZ, de Lima GM, Amorelli-Chacel ME, Covas DT, Machado AA. Hematological abnormalities in HIV-infected patients. *International Journal of Infectious Diseases*. 2011;15(12):e808-11.
  15. Amballi AA, Ajibola A, Ogun SA. Demographic pattern and haematological profile in people living with HIV in a university teaching hospital. *Sci Res Essay*. 2007;2(8):315-318.
  16. Kaslow RA, Phair JP, Friedman HB, et al. Infection with the human immunodeficiency virus: Clinical manifestations and their relationship to immune deficiency. *Ann Intern Med*. 1987;107(4):474-80.
  17. Mellors JW, Kingsley LA, Ronaldo CR, et al. Quantification of HIV-RNA in plasma predicts outcome after seroconversion. *Ann Intern Med*. 1995;122:573-9.
  18. Spivak JL, Barnes DC, Fuchs E, et al. Serum immunoreactive erythropoietin in HIV infected patients. *JAMA*. 1989;261:3104-7.
  19. Seneviratne LC, Tulpule A, Espina BM, et al. Clinical, immunologic, and pathologic correlates of bone marrow involvement in 291 patients with AIDS related lymphoma. *Blood*. 2001;98:2358-63.
  20. Enawgaw B, Alem M, Addis Z, Melku M. Determination of hematological and immunological parameters among HIV positive patients taking highly active antiretroviral treatment and treatment naïve in the antiretroviral therapy clinic of Gondar University Hospital, Gondar, Northwest Ethiopia: A comparative cross-sectional study. *BMC Hematology*. 2014;14(1):1.
  21. Dediran IA, Durosinmi MA. Peripheral blood and bone marrow changes in patients with acquired immunodeficiency syndrome. *Afr J Med Med Sci*. 2006;35:85-91.
  22. Akinbami A, Oshinaike O, Adeyemo T. Hematologic abnormalities in treatment-naïve HIV patients. Lagos, Nigeria. *Infect Dis: Res Treat*. 2010;3:45-49.
  23. Dreyfus DH. Autoimmune disease: A role for new anti-viral therapies? *Autoimmunity Reviews*. 2011;11(2):88-97.
  24. Urassa WK, Mbena EM, Swai AB, Gaines H, Mhalu FS, Biberfeld G. Lymphocyte subset enumeration in HIV seronegative and HIV-1 seropositive adults in Dar es Salaam, Tanzania: Determination of reference values in males and females and comparison of two flow cytometric

- methods. *Journal of Immunological Methods*. 2003;277(1):65-74.
25. Wolday D, Tsegaye A, Messele T. Low absolute CD4 counts in Ethiopians. *Ethiopian Medical Journal*. 2002;40:11-6.
26. Nwokedi EE, Ochicha O, Mohammed AZ, Saddiq NM. Baseline CD4 lymphocyte count among HIV patients in Kano, Northern Nigeria. *African Journal of Health Sciences*. 2007;14(3):212-5.
27. Saul J, Erwin J, Bruce JC, Peters B. Ethnic and demographic variations in HIV/AIDS presentation at two London referral centres 1995–9. *Sexually Transmitted Infections*. 2000;76(3):215.
28. Wig N, Anupama P, Singh S, Handa R, Aggarwal P, Dwivedi SN, Jaikhanani BL, Wali JP. Tumor necrosis factor- $\alpha$  levels in patients with HIV with wasting in South Asia. *AIDS Patient Care & STDs*. 2005;19(4):212-5.

© 2017 Robinson et al.; This is an Open Access article distributed under the terms of the Creative Commons Attribution License (<http://creativecommons.org/licenses/by/4.0>), which permits unrestricted use, distribution, and reproduction in any medium, provided the original work is properly cited.

*Peer-review history:*  
*The peer review history for this paper can be accessed here:*  
<http://sciencedomain.org/review-history/21129>