



Effect of Levels of Nitrogen and Seed Rate on Growth and Yield of Wheat (*Triticum aestivum* L.)

Chebrolu Sravani ^a*, Rajesh Singh ^b# and Pratyasha Tripathi ^c†

^a Department of Agronomy, Faculty of Agriculture, Naini Agricultural Institute, SHUATS, Prayagraj - 211007, Uttar Pradesh, India.

^b Department of Agronomy, Naini Agricultural Institute, SHUATS, Prayagraj, Uttar Pradesh, India.

^c Department of Mathematics and Statistics, Faculty of Science, SHUATS, Prayagraj, Uttar Pradesh, India.

Authors' contributions

This work was carried out in collaboration among all authors. All authors read and approved the final manuscript.

Article Information

DOI: 10.9734/IJECC/2022/v12i1030890

Open Peer Review History:

This journal follows the Advanced Open Peer Review policy. Identity of the Reviewers, Editor(s) and additional Reviewers, peer review comments, different versions of the manuscript, comments of the editors, etc are available here: <https://www.sdiarticle5.com/review-history/87454>

Original Research Article

Received 14 March 2022

Accepted 23 May 2022

Published 15 June 2022

ABSTRACT

The effect of nitrogen and seed rate on wheat traits like growth and yield was studied through an experiment conducted during *Rabi* 2021 at Crop Research Farm, Department of Agronomy, SHUATS, Prayagraj (U.P). The soil of experimental plot was sandy loam in texture, nearly neutral in soil reaction (pH 7.1), low in organic carbon (0.36 %), available nitrogen (171.48 kg/ha), available phosphorous (15.2 kg/ha) and available potassium (232.5 kg/ha). The experiment was laid out in Randomized Block Design with nine treatments each replicated thrice on the basis of one year experimentation. The treatments which are T1: nitrogen 80kg/ha + seed rate 75kg/ha, T2: nitrogen 100kg/ha + seed rate 75kg/ha, T3: nitrogen 120kg/ha + seed rate 75kg/ha, T4: nitrogen 80kg/ha + seed rate 100kg/ha, T5: nitrogen 100kg/ha + seed rate 100kg/ha, T6: nitrogen 120kg/ha + seed rate 100kg/ha, T7: nitrogen 80kg/ha + seed rate 125kg/ha, T8: nitrogen 100kg/ha + seed rate 125kg/ha, T9: nitrogen 120kg/ha + seed rate 125kg/ha are used. The results showed that among different seed rate and nitrogen, the treatment with nitrogen 120kg/ha and seed rate 75kg/ha produced significantly highest plant height (101.20 cm). The treatment combination with nitrogen 120kg/ha + seed rate 100kg/ha produced significantly higher No. of Tillers/plant (7.27),

*M.Sc. Scholar;

#Associate Professor;

†Assistant Professor;

*Corresponding author: E-mail: sravanichebrolu333@gmail.com;

Plant dry weight (21.60 g/plant), Crop growth rate (0.48 g/m²/day), Relative Growth Rate (0.014g/g/day), spikelets/spike (20.07), Grains/spike (58.53), Test weight (46.23 g) and Grain yield (5.91 t/ha). However, the treatment with nitrogen 120kg/ha and seed rate 100kg/ha was found to be effective in highest gross returns (89060.00 INR/ha), net return (58360.03 INR/ha) and benefit/cost ratio (2.90) when compared to other treatments.

Keywords: *Wheat; nitrogen; seed rate; growth; yield.*

1. INTRODUCTION

“Wheat (*Triticum aestivum* L.), which triggered Green revolution in the Indian subcontinent, is an important food grain providing nourishment nearly to 35 per cent people of the world” (IDRC 2010). “On global scale, the crop is grown over an area of 211.06 million ha with a production of 566.8 million tonnes. India is the second largest producer of wheat in the world next only to China and the crop has provided the fastest pace of growth to Indian agriculture. Among cereals, wheat is next to rice in area (24.23 million ha) and production (75.6 million tonnes)” [1]. “Wheat contributes about 60 per cent of daily protein requirement and more calories to world diet than any other food crop” [2]. “Wheat is one of the most important cereal crops of India with diverse uses. Intensive cultivation has resulted in depletion of soil nutrients to a great extent thus nutrients requirement of crops has increased considerably during the last few years.

In the world, (*Triticum aestivum* L.) bread wheat, holds a leading position among the food cereals. It contains carbohydrate (70 – 72%) with considerable amount of Protein(10–13%), Fiber (11%), Fat (3%),” [3]. In a small part of the general population, gluten – the major part of wheat protein – can trigger coeliac disease, non coeliac gluten sensitivity, gluten ataxia, and dermatitis herpetiformis.

“Nitrogen plays noticeable role in plant metabolism and all the vital physiological and metabolic processes in plant are associated with protein of which nitrogen is an essential constituent” [4]. “Nitrogen is the key nutrient element and plays an inevitable role to increase the tillering capacity which leads to higher potential yields” [5]. “Increasing nitrogen levels increases the plant height, tiller numbers/m² leaf number/plant and dry matter accumulation and also yield attributing characters viz. ear weight, grain number/ear test weight significantly” [6].

“Seeding rate is one of the important production factors. Higher wheat grain yield with better

quality requires appropriate seeding rate for different cultivars. Increase in seed rate above optimum level may only enhance production cost without any increase in grain yield” [7]. “The optimum seed rates for wheat alter with variety, location and method of planting” [8]. “Wheat sowing at higher seed rate produced greater plant height” [9] and also “higher yield attributes such as grains/spike, grains weight/spike, 1,000 grains weight and number Of effective tillers” (Kumar et al. 2002). “With increasing seed rate there was an increase in yield mainly through more spikes per plant, which compensated for a decrease in seeds per head” [10].

2. MATERIALS AND METHODS

The present examination was carried out during Rabi 2021 at Crop Research Farm, Department of Agronomy, SHUATS, Prayagraj, UP, which is located at 25.28°N latitude, 81.54°E longitude and 98 m altitude above the mean sea level. The experiment laid out in Randomized Block Design which consisting of nine treatments with T1: nitrogen 80kg/ha + seed rate 75kg/ha, T2: nitrogen 100kg/ha + seed rate 75kg/ha, T3: nitrogen 120kg/ha + seed rate 75kg/ha, T4: nitrogen 80kg/ha + seed rate 100kg/ha, T5: nitrogen 100kg/ha + seed rate 100kg/ha, T6: nitrogen 120kg/ha + seed rate 100kg/ha, T7: nitrogen 80kg/ha + seed rate 125kg/ha, T8: nitrogen 100kg/ha + seed rate 125kg/ha, T9: nitrogen 120kg/ha + seed rate 125kg/ha are used. The experimental site was uniform in topography and sandy loam in texture, nearly neutral in soil reaction (P^H 7.1), low in Organic carbon (0.38%), medium available nitrogen (225 kg /ha), higher available phosphorous (19.50 kg/ha) and medium available potassium (213.7 kg /ha). In the period from germination to harvest several plant growth parameters were recorded at frequent intervals along with it after harvest several yield parameters were recorded. The growth parameters plant height, no. of tillers/plant, plant dry weight, Crop Growth Rate and Relative Growth Rate are recorded. The yield parameters like No. of spikelets/spike, grains/spike, grain yield, test weight, stover yield

and harvest index were recorded and statistically analyzed using analysis of variance (ANOVA) as applicable to Randomized Block Design [11].

3. RESULTS AND DISCUSSION

3.1 Growth Attributes

The growth attributes were recorded at different time intervals and statistically analyzed.

3.1.1 Plant height (cm)

The results in Table (1) showed that the plant height was significantly increased with the increase in crop age during the experimentation. At 100 Days after sowing, highest plant height (101.20cm) was recorded with application of nitrogen 120 kg/ha and seed rate 75 kg/ha over all the other treatments. Where, the application of nitrogen 100 kg/ha and seed rate 75 kg/ha (100.1 cm) was found to be statistically at par with the application of nitrogen 120 kg/ha and seed rate 75 kg/ha compared to all other treatments.

Increase in plant height at medium and high fertilizer level might be due to proper nutrition availability which resulted in increase in

vegetative growth of the plants. It might be of healthy seedlings which increase the height of plants or probably due to positive effect of increasing rate of levels of nitrogen.

3.1.2 Number of tillers/plant

It was noticed from Table (1) that the number of tillers per plant was progressively increased with the increase in crop age during the experimentation. At 100 days after sowing highest number of tillers per plant (7.27) was reported with application of N 120 kg/ha and seed rate 100 kg/ha which was significantly superior over all the treatments where, the application of N 100 kg/ha and seed rate 100 kg/ha (7.23) was found to be statistically at par with the application of N 120 kg/ha and seed rate 100 kg/ha as compared to all the treatments.

The number of tillers were increased due to the greater availability of nutrients in soil due to increasing application of Nitrogen doses might have enhanced multiplication and elongation of cells leading to increased number of tillers as reported by Sharma et al.(2011).

Table 1. Effect of Nitrogen and Seed rate on Growth parameters of Wheat

Treatments	Plant height(cm)	Tillers/ plant	Dry weight(g)	Crop Growth Rate(g/day/m ²)	Relative Growth Rate(g/g/day)
1. Nitrogen 80kg /ha+seed rate 75 kg /ha	98.77	6.70	19.67	0.39	0.012
2. Nitrogen 100 kg /ha+seed rate 75 kg /ha	100.10	7.15	19.97	0.41	0.012
3. Nitrogen 120 kg /ha+seed rate 75 kg /ha	101.20	7.23	20.80	0.41	0.011
4. Nitrogen 80 kg /ha+seed rate 100 kg /ha	98.00	6.73	19.53	0.39	0.013
5. Nitrogen 100 kg /ha+seed rate 100kg /ha	99.23	6.83	21.37	0.46	0.013
6. Nitrogen 120 kg /ha+seed rate 100 kg /ha	99.73	7.27	21.60	0.48	0.014
7. Nitrogen 80 kg /ha+seed rate 125 kg /ha	96.00	6.77	17.83	0.45	0.012
8. Nitrogen 100 kg /ha+seed rate 125 kg /ha	96.60	6.70	18.90	0.39	0.012
9. Nitrogen 120 kg /ha+seed rate 125kg /ha	97.13	6.93	19.03	0.45	0.011
F test	S	S	S	S	S
S. Em (±)	0.19	0.07	0.30	0.032	0.001
CD (P = 0.05)	1.58	0.21	0.89	-	0.001

3.1.3 Plant dry weight (g/plant)

It was noticed from Table (1) that the plant dry weight(g) was progressively increased with the increase in crop age during the experimentation. At 100 days after sowing highest plant dry weight (21.60 g) was reported with application of N 120 kg/ha and seed rate 100 kg/ha which was significantly superior over all the treatments. Where, the application of N 100 kg/ha and seed rate 100 kg/ha (21.37 g) was found to be statistically at par with the application of N 120 kg/ha and seed rate 100 kg/ha as compared to all the treatments.

The plants attained more vigour with nitrogen , due to adequate supply and availability of nitrogen and seed rate in balanced combination, resulting in increased dry weight of the plant. The application of Nitrogen 120 kg/ha to wheat significantly increased dry matter production. The results were found to be similar with Khan et al. [12].

3.1.4 Crop growth rate

It was noticed from Table (1) that the Crop Growth Rate (g/day/m²) was progressively increased with the increase in crop age during the experimentation. At 100 days after sowing highest Crop Growth Rate (0.48 g/day/m²) was reported with application of N 120 kg/ha and seed rate 100 kg/ha which was significantly superior over all the treatments. Where, the application of N 100 kg/ha and seed rate 100 kg/ha (0.46 g/day/m²) was found to be statistically at par with the application of N 120

kg/ha and seed rate 100 kg/ha as compared to all the treatments.

3.1.5 Relative growth rate

It is noticed from Table (1) that the Relative Growth Rate (g/day/m²) was progressively increased with the increase in crop age during the experiment. At 100 DAS highest Relative Growth Rate (0.014 g/g/day) was reported with application of N 120 kg/ha and seed rate 100 kg/ha which was significantly superior over all the treatments. Where, the application of N 100 kg/ha and seed rate 100 kg/ha (0.013 g/g/day) was found to be statistically at par with the application of N 120 kg/ha and seed rate 100 kg/ha as compared to all the treatments.

3.2 Yield Attributes and Yield

The yield attributes and yield were recorded after harvest and statistically analyzed.

3.2.1 Number of spikelets/spike

It was noticed from Table (2) that the highest number of spikelets/spike (20.07) was reported with application of N 120 kg/ha and seed rate 100 kg/ha which was significantly superior over all the treatments. Where, the application of N 100 kg/ha and seed rate 100 kg/ha recording (19.33) was found to be statistically at par with the application of N 120 kg/ha and seed rate 100 kg/ha as compared to all the treatments. The minimum (16.93) number of spikelets/spike was recorded with the application of N 80 kg/ha and seed rate 125 kg/ha.

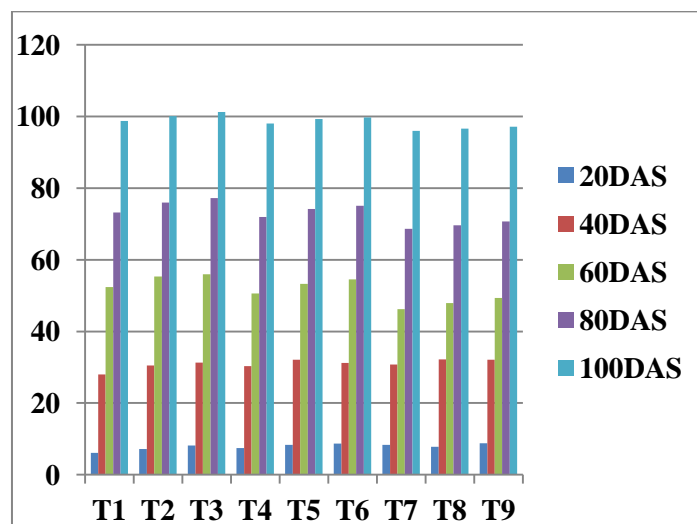


Fig. 1. Graph relates to plant height

Table 2. Effect of nitrogen and seed rate on yield attributes and yield of wheat

Treatments	Spikelets/ spike	Grains/ spike	Test Weight (g)	Grain yield (t/ha)	Straw yield(t/ha)	Harvest Index(%)
1. Nitrogen 80kg /ha+seed rate 75 kg /ha	17.33	50.25	40.57	4.91	7.30	35.70
2. Nitrogen 100 kg /ha+seed rate 75 kg /ha	17.53	50.67	43.40	5.02	7.48	36.12
3. Nitrogen 120 kg /ha+seed rate 75 kg /ha	18.87	52.80	44.60	5.09	7.78	39.24
4. Nitrogen 80 kg /ha+seed rate 100 kg /ha	19.20	51.07	42.10	5.28	8.18	37.90
5. Nitrogen 100 kg /ha+seed rate 100kg /ha	19.33	56.83	45.47	5.64	8.98	39.49
6. Nitrogen 120 kg /ha+seed rate 100 kg /ha	20.07	58.53	46.23	5.91	9.07	40.19
7. Nitrogen 80 kg /ha+seed rate 125 kg /ha	16.93	42.60	39.30	5.34	8.76	39.55
8. Nitrogen 100 kg /ha+seed rate 125 kg /ha	18.13	46.42	41.77	5.41	9.75	39.55
9. Nitrogen 120 kg /ha+seed rate 125kg /ha	17.73	42.60	43.03	5.54	9.80	40.24
F test	S	S	S	S	S	S
S. Em (±)	0.79	2.38	0.05	1.63	2.49	0.51
CD (P = 0.05)	1.68	5.05	1.16	4.9	5.29	4.21

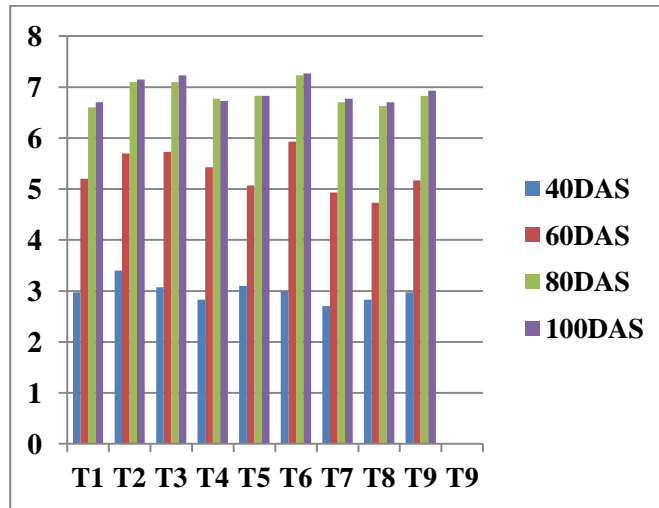


Fig. 2. Graph relates about number of tillers per plant

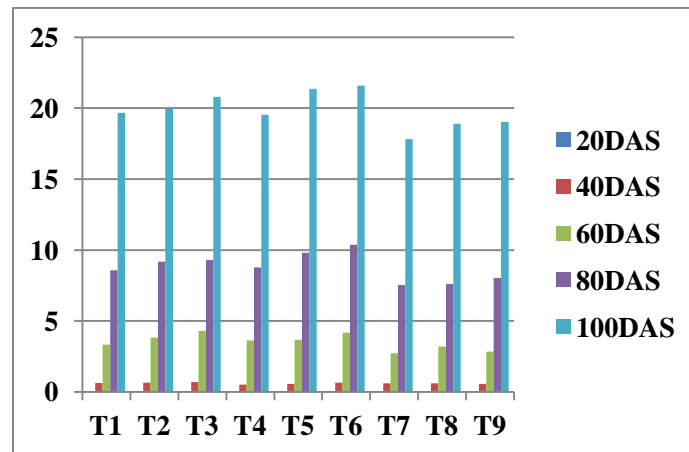


Fig. 3. Graph relates about plant dry weight

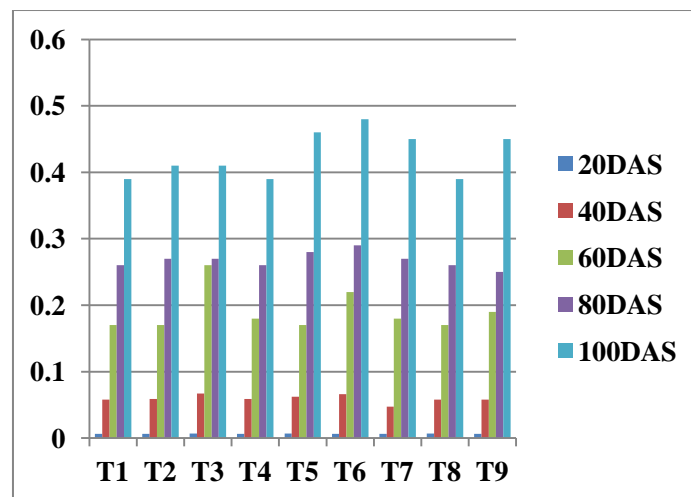


Fig. 4. Graph relates about crop growth rate

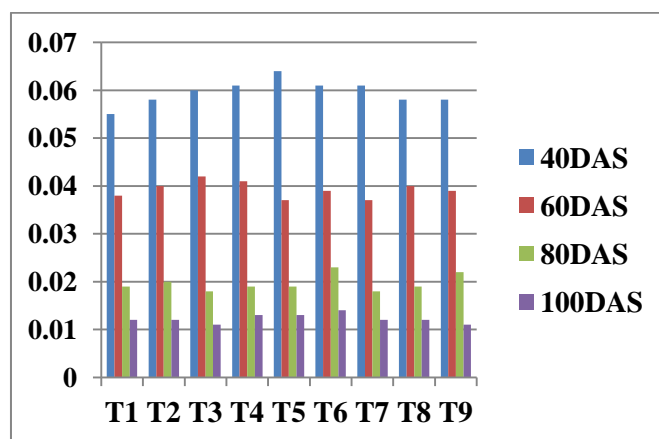


Fig. 5. Graph relates about relative growth rate

3.2.2 Number of grains/spike

It is noticed from Table (2) that the highest number of grains/spike (58.53) was reported with application of N 120 kg/ha and seed rate 100 kg/ha which was significantly superior over all the treatments. Where, the application of N 100 kg/ha and seed rate 100 kg/ha recording (56.83) was found to be statistically at par with the application of N 120 kg/ha and seed rate 100 kg/ha as compared to all the treatments. The minimum number of grains/spike (42.60) was recorded with the application of N 80 kg/ha and seed rate 125 kg/ha.

Increase in value of yield contributing characters with higher doses of nitrogen was due to the facts that the optimum seed rate also plays major role in better vegetative growth and development of wheat.

3.2.3 Test weight (g)

It was noticed from Table (2) that the highest test weight (46.23g) was reported with application of N 120 kg/ha and seed rate 100 kg/ha which was significantly superior over all the treatments. Where, the application of N 100 kg/ha and seed rate 100 kg/ha recording (45.60g) was found to be statistically at par with the application of N 120 kg/ha and seed rate 100 kg/ha as compared to all the treatments. The minimum number of grains/spike (39.30g) was recorded with the application of N 80 kg/ha and seed rate 125 kg/ha.

Higher vigour and growth attained by the plants due to sufficient absorption of nutrients might have resulted in higher test weight Noonari et al. [13].

3.2.4 Grain yield (t/ha)

It was noticed from Table (2) that the highest grain yield (5.91t/ha) was reported with application of N 120 kg/ha and seed rate 100 kg/ha which was significantly superior over all the treatments. Where, the application of N 100 kg/ha and seed rate 100 kg/ha recording (5.87t/ha) was found to be statistically at par with the application of N 120 kg/ha and seed rate 100 kg/ha as compared to all the treatments. The minimum grain yield (4.91t/ha) was recorded with the application of N 80 kg/ha and seed rate 75 kg/ha.

The increase in grain yield due to the optimum seed rate 100kg/ha application is attributed to better crop stand and decreased competition. It appears that greater translocation of photosynthates from source to sink might have increased seed yield. Increased nitrogen fertilizer and its availability to the plants and favourable environments in the rhizosphere. The results were in according with Sandana and Pinochet [14].

3.2.5 Straw yield (t/ha)

It was noticed from Table (2) that the highest straw yield (9.80t/ha) was reported with application of N 120 kg/ha and seed rate 125 kg/ha which was significantly superior over all the treatments. Where the application of N 100 kg/ha and seed rate 125 kg/ha recording (9.75t/ha) was found to be statistically at par with the application of N 120 kg/ha and seed rate 125 kg/ha as compared to all the treatments. The minimum straw yield (7.30t/ha) was recorded with the application of N 80 kg/ha and seed rate 75 kg/ha.

3.2.6 Harvest index

It was noticed from Table (2) that the highest harvest index(40.24%) was reported with application of N 120 kg/ha and seed rate 125 kg/ha which was significantly superior over all the treatments. Where the application of N 100 kg/ha and seed rate 125 kg/ha and N 80 kg/ha and seed rate 125 kg/ha recording (39.55%) were found to be statistically at par with the application of N 120 kg/ha and seed rate 125 kg/ha as compared to all the treatments. The minimum harvest index (35.70%) was recorded with the application of N 80 kg/ha and seed rate 75 kg/ha.

4. CONCLUSION

It is concluded that the application of Nitrogen 120 kg/ha and Seed rate 100 kg/ha was found to be most productive and economically viable.

COMPETING INTERESTS

Authors have declared that no competing interests exist.

REFERENCES

- Jagshoran, Sharma RK, Tripathi SC. New varieties and production. The Hindu, Survey of Indian Agriculture. 2004;33-35.
- Mattern PJ, Schmidt JW, Johnson VA. Screening for high lysine content in wheat. Cereal Sci. Today. 1970;15:409.
- Kumar V. Effect of dates of sowing on growth and yield of wheat (*Triticum aestivum* L.) varieties. Thesis, M.Sc. (Agronomy), Department of Agronomy, Institute of Agricultural Sciences, Banaras Hindu University, Varanasi; 2011.
- Adnan M, Shah Z, Ullah H, Khan B, Arshad M, Mian IA, Khan GA, Alam M, Basir A, Ali M, Khan WU. Yield response of wheat to nitrogen and potassium fertilization. Pure and Applied Biology. 2016;5(4):1.
- Ames NP, Clarke JM, Dexter JE, Woods SM, Selles F, Marchylo B. Effects of nitrogen fertilizer on protein quantity and gluten strength parameters in durum wheat (*Triticum turgidum* L. var. durum) cultivars of variable gluten strength. Cereal Chemistry. 2003;80(2):203-11.
- Sharma A, Rawat US, Yadav BK. Influence of Phosphorus Levels and Phosphorus Solubilizing Fungi on Yield and Nutrient Uptake by Wheat under Sub-Humid Region of Rajasthan. International Scholarly Research Network; 2001.
- Rafique SM, Rashid M, Akram MM. Optimum seed rate of wheat in available soil moisture under rainfed conditions. Journal of Agricultural Research. 2010;47(2).
- Larson E, Watson R. Planting methods and seeding rates for small grain crops. Publication 2401 extension service of Mississippi state university, cooperating with U.S. Department of Agriculture; 2010. Available: <http://msucare.com/pubs/publications/p2401.pdf>.
- Soomro UA, Ur Rahman M, Odhano EA, Gul S, Tareen A. Effect of sowing methods and seed rate on growth and yield of wheat (*Triticum aestivum*). World Journal of Agricultural Sciences. 2009.5(2):159-162.
- Arian MA, MA Sial and MA Javed. Influence of different seeding rates and row spacings on yield contributing traits in wheat. Pakistan Journal of Seed Technology. 2002;1(1):1-6.
- Gomez KA, Gomez AA. Statistical procedures for agricultural research. 2nd Ed., Wiley and sons, Inc. New York, USA; 1984.
- Khan R, Gurmani AR, Gurmani AH, Zia MS. Effect of phosphorus application on wheat and rice yield under wheat- rice system. Sarhad Journal of Agriculture. 2017;23(4):851-856.
- Noonari S, Ali KS, Ali A, Amanullah M, Raza S, Munnesr A, Fayaz AS, Ullah BS. Effect of Different levels of Phosphorous and Method of Application on Growth and Yield of Wheat. Natural Science. 2016;8:305-314.
- Sandana P, Pinochet D. Grain yield and phosphorus use efficiency of wheat and peain a high yielding environment. Journal of Soil Science and Plant Nutrition. 2014;14(4):973-986.

© 2022 Sravani et al.; This is an Open Access article distributed under the terms of the Creative Commons Attribution License (<http://creativecommons.org/licenses/by/4.0>), which permits unrestricted use, distribution, and reproduction in any medium, provided the original work is properly cited.

Peer-review history:

The peer review history for this paper can be accessed here:
<https://www.sdiarticle5.com/review-history/87454>